

PLAZA SERIES

PLAZA is a contemporary series that displays subtle movement and colour variation for a soft limestone look. Available in four colours and three finishes including a feature fishbone tile.



PRODUCT TYPE: Glazed porcelain

COLOURS: Cream, Putty, Taupe and Dark Taupe

SIZES: 300x300mm, 300x600mm and 600x600mm
Rectified Edges

FINISHES/USAGE:

AESTHETIC QUALITIES:

ORIGIN:

TECHNICAL DATA:

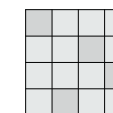
Matt, Grip and Fishbone/Wall and Floor

Subtle movement and colour variation

N/A

P3 Pendulum slip rating (Matt)
P4 Pendulum slip rating (Grip)
More technical data on last page

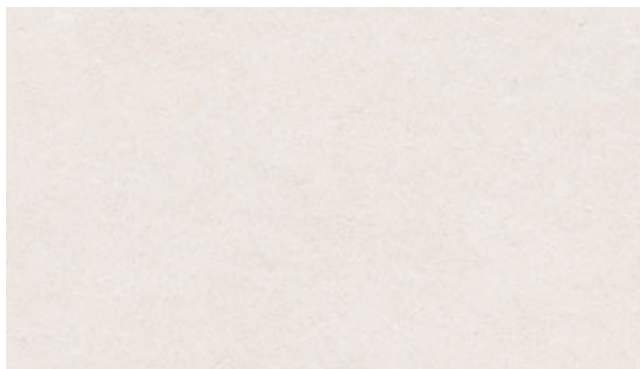
VARIATION:



V2

PLAZA SERIES

PRODUCT INFORMATION



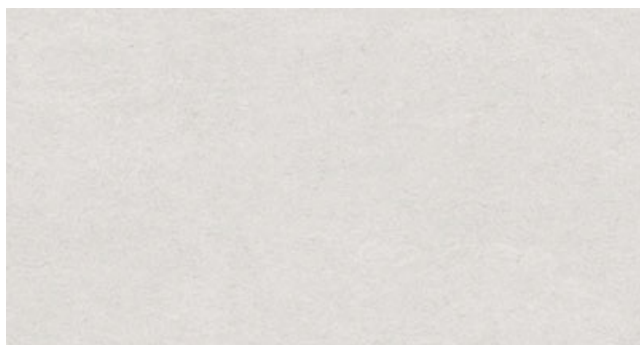
Cream 10460M

Matt 300x300mm | 300x600mm | 600x600mm



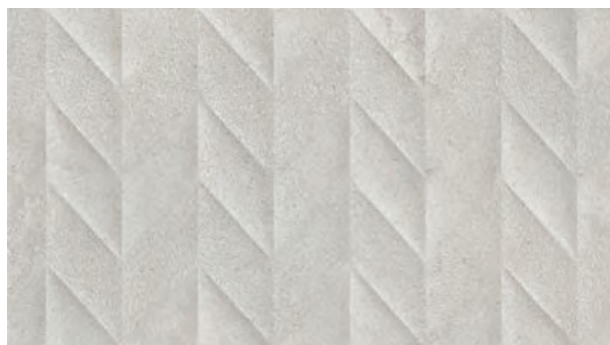
Cream 10460M Feature

Fishbone 300x600mm



Putty 10461M

Matt 300x300mm | 300x600mm | 600x600mm
Grip 300x600mm



Putty 10461M Feature

Fishbone 300x600mm



Variation is an inherent property of tiles and stone. Sizes are nominal and may include a joint.

PLAZA SERIES

PRODUCT INFORMATION



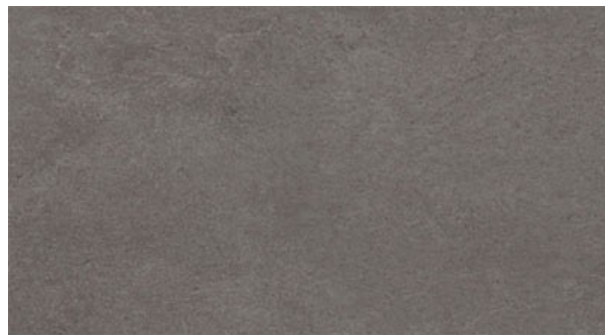
Taupe 10462M

Matt 300x300mm | 300x600mm | 600x600mm



Taupe 10462M Feature

Fishbone 300x600mm



Dark Taupe 10463M

Matt 300x300mm | 300x600mm | 600x600mm

Grip 300x600mm



Variation is an inherent property of tiles and stone. Sizes are nominal and may include a joint.

PLAZA SERIES

LIFESTYLE IMAGES



Variation is an inherent property of tiles and stone. Sizes are nominal and may include a joint.

PLAZA SERIES

TECHNICAL DATA

Technical Characteristics	Test Method	Requirement	Result
Surface quality	ISO 10545-2	95%	100%
Length and Width	ISO 10545-2	± 0,6%	0.5%
Thickness	ISO 10545-2	± 0,5	± 0,5
Straightness of sides	ISO 10545-2	± 0,5%	± 0,3%
Water Absorption	ISO 10545-3	3%	3%
Modulus of Rupture	ISO 10545-4	35	38
Breaking Strength	ISO 10545-4	1100	1300
Crazing Resistance	ISO 10545-11	Pass	Resistant
Chemical Resistance	ISO 10545-13	Declared Value	ULA / UHB
Stain Resistance	ISO 10545-14	Minimum Class 3	Class 5