

VITALITY SERIES

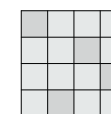


VITALITY features realistic natural movement and textures seen in stone and is available in four organic colours and two sizes.

PRODUCT TYPE: Glazed porcelain
COLOURS: Cream, Greige, Grey and Black
SIZES: 300x300mm, 300x600mm and 600x600mm
Rectified Edge

FINISHES/USAGE: Matt/Wall and Floor
AESTHETIC QUALITIES: Natural Movement
ORIGIN: N/A
TECHNICAL DATA: P4 Pendulum slip rating (Matt)
More technical data on last page

VARIATION:



V2

VITALITY SERIES

PRODUCT INFORMATION



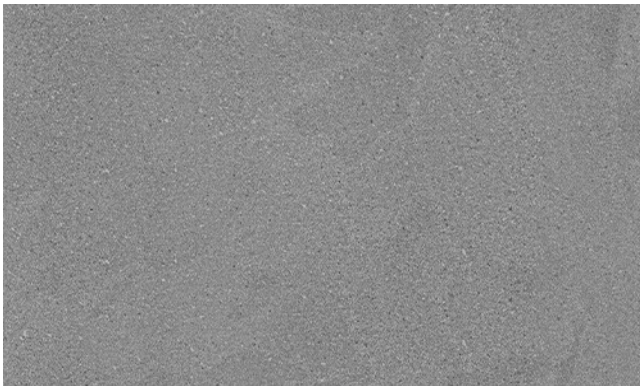
Cream 13321

Matt 300x300mm | 300x600mm | 600x600mm



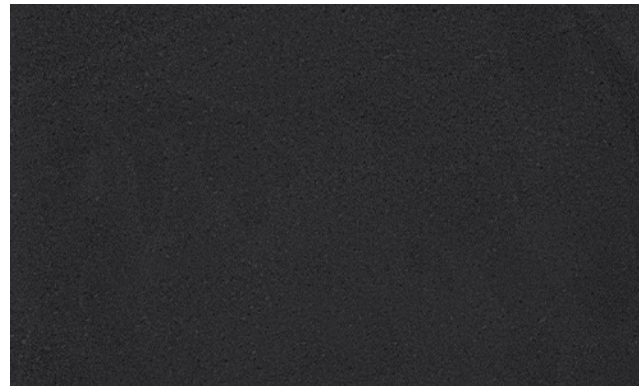
Greige 13320

Matt 300x300mm | 300x600mm | 600x600mm



Grey 13322

Matt 300x300mm | 300x600mm | 600x600mm



Black 13323

Matt 300x300mm | 300x600mm | 600x600mm



VITALITY SERIES

LIFESTYLE IMAGES



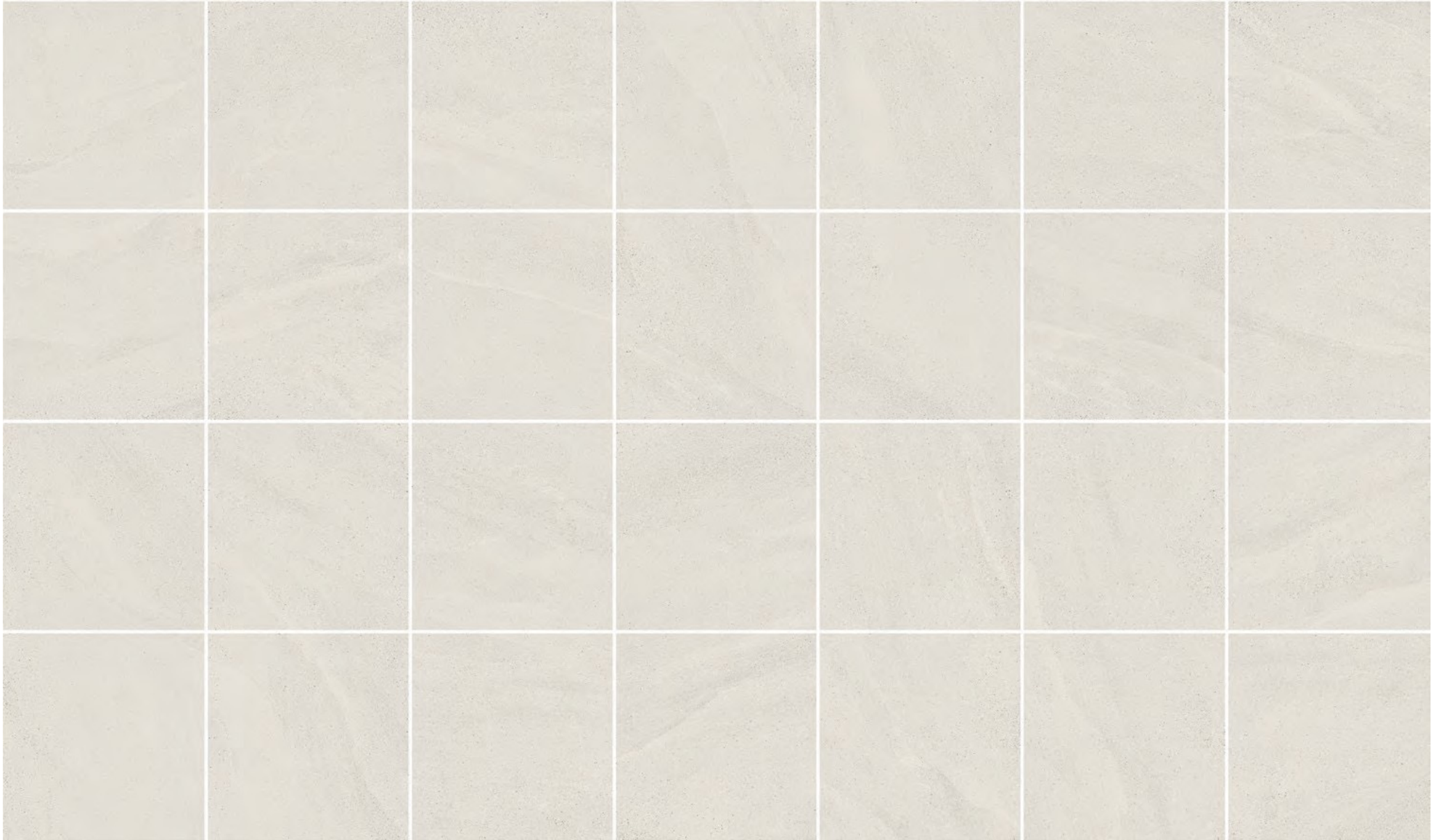
VITALITY SERIES

LIFESTYLE IMAGES



VITALITY SERIES

VARIATION - CREAM



Variation is an inherent property of tiles and stone. Sizes are nominal and may include a joint.

VITALITY SERIES

VARIATION - GREIGE



Variation is an inherent property of tiles and stone. Sizes are nominal and may include a joint.

VITALITY SERIES

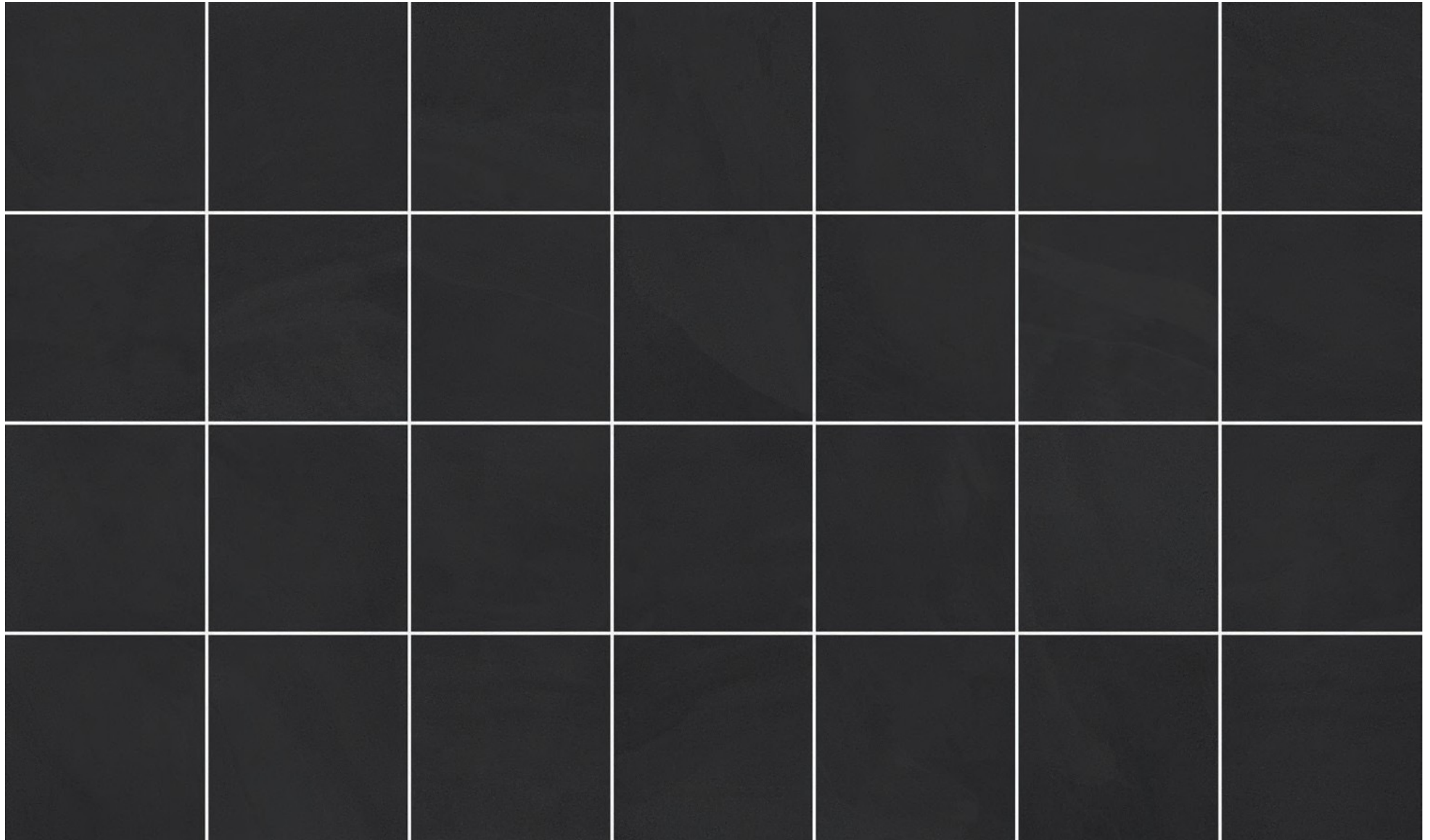
VARIATION - GREY



Variation is an inherent property of tiles and stone. Sizes are nominal and may include a joint.

VITALITY SERIES

VARIATION - BLACK



Variation is an inherent property of tiles and stone. Sizes are nominal and may include a joint.

VITALITY SERIES

TECHNICAL DATA

Technical Characteristics	Test Method	Requirement	Result
Surface quality	ISO 10545-2	95%	100%
Length and Width	ISO 10545-2	± 0,6%	0.5%
Thickness	ISO 10545-2	± 0,5	± 0,5
Straightness of sides	ISO 10545-2	± 0,5%	± 0,3%
Water Absorption	ISO 10545-3	3%	3%
Modulus of Rupture	ISO 10545-4	35	38
Breaking Strength	ISO 10545-4	1100	1300
Crazing Resistance	ISO 10545-11	Pass	Resistant
Chemical Resistance	ISO 10545-13	Declared Value	ULA / UHB
Stain Resistance	ISO 10545-14	Minimum Class 3	Class 5